

Arizona OHV Grant Program

The mission of the Arizona Off Highway Vehicle Program is to develop vehicular recreational opportunities and educational programs that promote user education, interagency cooperation and natural resource protection.

The Arizona Legislature created the OHV Program in 1991. The Legislature set the funding mechanism at 0.55 percent of the annual state motor fuel tax revenues. In 2009 the decal program began and today both funds are used for OHV projects.

Arizona State Parks administers the program azstateparks.com/ohv:

- 60 percent of the funds goes to OHV grants and agreements (12 percent is for administration of the program), road construction, development, maintenance, signage and maps of roads/trails;
- 35 percent goes to Game and Fish Department for law enforcement, education and outreach;
- 5 percent goes to the Arizona State Land Department for mitigation, signage and enforcement.

More information can be found at the Game and Fish website azgfd.com/ohv/.

Arizona OHV Decal Requirements

The OHV decal program is intended for vehicles designed by the manufacturer to travel over unimproved roads, to have a laden weight of 2500 pounds or less, and/or an engine greater than 49cc. A decal is required for use on all public and state trust lands and must be displayed in the upper left hand corner of your license plate. Pickup trucks, SUVs, cars and other recreational vehicles are not required to have an OHV decal.



The decal is not a registration and you are required to have a registration if you plan to travel on paved and improved roads and streets.



Arizona residents will need an Arizona certificate of title, insurance and an Arizona license plate. Decals can be purchased through any Motor Vehicle Division (MVD) office or azmvdnow.gov and are good for one year from date of purchase for each vehicle. The cost of the decal is \$25.



Non-Arizona residents will need to purchase an OHV decal for each vehicle they The decal must be purchased prior to riding in Arizona. The non-resident decal is only available online through the Arizona Game and Fish Department at azgfd.com/OHV/Decals/



Required Equipment for OHVs

Equipment includes rearview mirror, seat, footrests, eye protection or windshield, muffler with a limit of 96 decibels, spark arrestor, safety flag and license plate.



Helmets are required for anyone under the age of 18. Children should never ride OHVs designed for adults. There are size and age appropriate OHVs designed for children, and are intended for one operator with no passenger. Always follow the manufacturer's minimum age recommendations, and make sure your children ride with the appropriate safety equipment.

Arizona State Land Permit

When driving off pavement in Arizona you need to have an Arizona State Land Recreation Permit, available online at land.az.gov/applications-permits.

Arizona State Trust Land is held in trust for the Arizona schools, hospitals and other educational or charitable beneficiaries. All sales of land and permits go to benefit these beneficiaries.

Avenza Map App

Avenza is a mobile app that allows you to download maps for offline use on an iOS or Android smartphone or tablet. Use your device's built-in GPS to track your location on any map, plot locations and photos, measure distance and area, and more. The app only uses your minutes to download the program and maps; otherwise it uses your GPS.



Santa Catalina RD

Scan the QR code are for the Motor Vehicle Use Map (MVUM) for the Santa Catalina RD in the Coronado NF or at fs.usda.gov/main/coronado/maps-pubs, all other NF MVUMs can be found at fs.usda.gov.

More Information

Coronado NF Supervisor's Office, 300 W. Congress, Tucson, AZ 85701, (520)388-8300

Arizona Game and Fish Department, Tucson Field Office, 555 N. Greasewood Rd., Tucson, AZ 85745, (520)628-5376, azgfd.com

Arizona State Land Department, 1616 W. Adams St., Phoenix, AZ 85007, (602)542-4631, land.az.gov

Arizona State Parks, 23751 N. 23rd Ave., #190, Phoenix, AZ 85085, azstateparks.com

Charouleau Gap Coronado National Forest Santa Catalina Ranger District



This brochure was developed by the Arizona State Association of 4 Wheel Drive Clubs with an Arizona OHV Grant (OHV decal and gas tax revenue) and in cooperation with the Coronado National Forest.

Printing was paid for through a Recreational Trails Program Grant and donations from the Arizona State Association of 4 Wheel Drive Clubs and the Arizona Four Wheel Drive Foundation.

Local Contacts:

Santa Catalina Ranger District, 5700 N. Sabino Canyon Rd., Tucson, AZ 85750, (520)749-8700, fs.usda.gov/main/coronado/home.

Arizona State Association of 4 Wheel Drive Clubs, asa4wdc.org

Arizona Four Wheel Drive Foundation, afwdf.org

Tucson RoughRiders, tucsonroughriders.com



www.asa4wdc.org



www.afwdf.org



www.tucsonroughriders.com



www.fs.fed.us
USDA is an equal opportunity provider, employer and lender

Partnership and Volunteers Sustaining the Charouleau Gap Road

Charouleau Gap or “The Gap” Road is primarily used for off-highway recreation, hunting, bicycling, horseback riding, hiking, ranching, and fire suppression. It is the main route through the Santa Catalina Mountains from Catalina to Oracle.

The road has been maintained for over 20 years in part by volunteers from the Tucson RoughRiders (TRR) through an Arizona State Association of 4 Wheel Drive Clubs (ASA4WDC) Adopt-a-Road agreement with the Coronado National Forest. The ASA4WDC, established in 1976, is a statewide four wheel drive association that promotes responsible motorized recreation. The TRR, a club for full size four-wheel drive owners, is a member of the ASA4WDC.

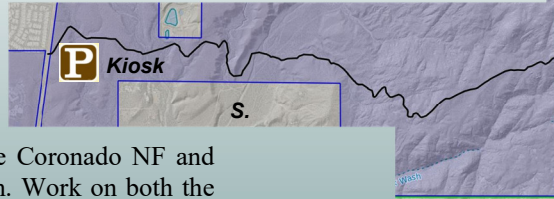
The Charouleau Gap Road access was almost lost back in the 1990s to surrounding development. However, a long standing, good working relationship with the Arizona Game and Fish Department and the Santa Catalina Ranger District helped secure access on the Catalina side.



Through planning, letter writing and many meetings, the ASA4WDC and the TRR worked to come up with a solution to keep this road open for all uses, including local businesses.

An easement was secured through AZ Game and Fish Heritage Funds for continued access and a new entrance road into the Coronado National Forest. The TRR and other ASA4WDC clubs volunteered their time, along with the Arizona Game and Fish Department and the Santa Catalina RD worked together to relocate the existing vegetation by hand, build the access road, install fencing, signage.

TRR volunteers help maintain the road through an agreement with the Coronado NF and ASA4WDC Adopt-A-Road program. Work on both the Gap and Rice Peak roads has resulted in over 10,000 hours of volunteer time filling in washouts, stabilizing the roadway, installing fencing, kiosks and signs, and performing other maintenance along the routes.



Disclaimer

The ASA4WDC and the affiliated clubs, AZ Four Wheel Drive Foundation, Tucson RoughRiders, AZ Game and Fish Department, Coronado National Forest, AZ State Land Department and AZ State Parks are not responsible or liable for any mishap to or injury, death or damage to any vehicle, person or public/private property.

OHV Information

This brochure is for information only and may not show changes to the area with regard to Travel Management. Refer to the latest MVUM for this area.

OHV Trail Etiquette

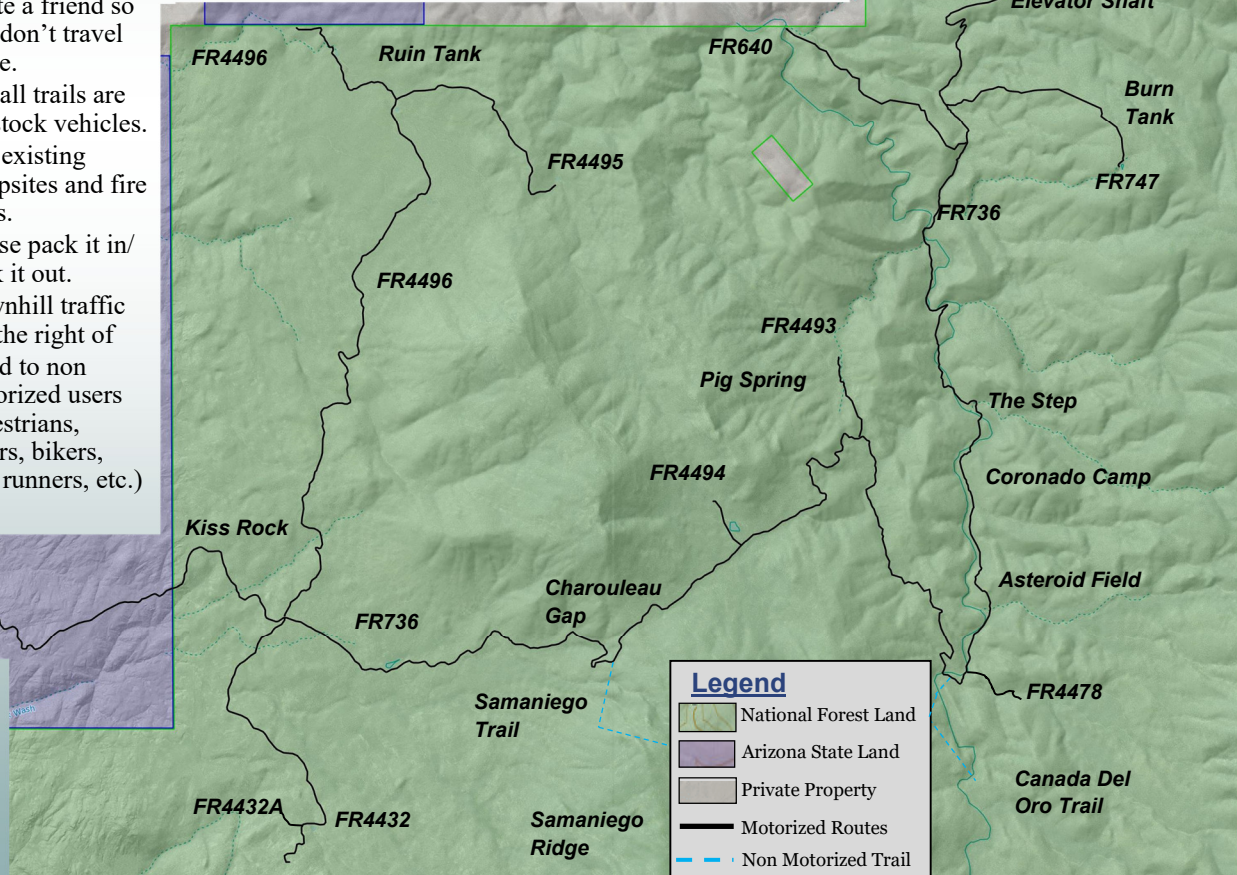
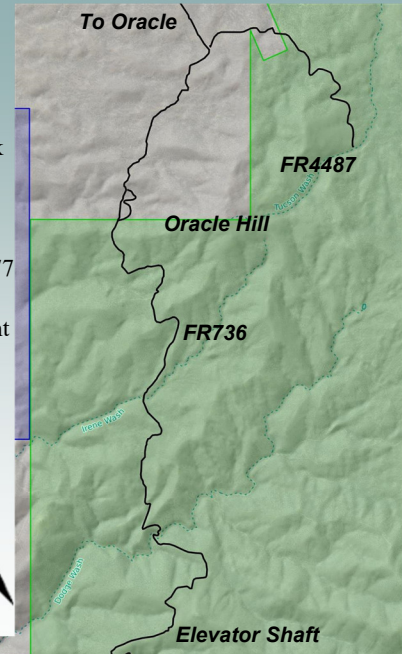
- Check with local clubs about difficulty of the trail.
- Let someone know where you are going, your destination and time you expect to return.
- Leave all gates as you found them. If they are open do not close. If they are closed please close them. This is open range.
- Travel on designated routes only.
- Invite a friend so you don't travel alone.
- Not all trails are for stock vehicles.
- Use existing campsites and fire rings.
- Please pack it in/ pack it out.
- Downhill traffic has the right of
- Yield to non motorized users equestrians, hikers, bikers, trail runners, etc.)

Directions

From Tucson-Take Catalina Hwy north to Golder Ranch Road, turn left on South Lago del Oro, continue to the kiosk and staging area on your right.

From Oracle-Take Hwy 77 to Oracle, turn right onto American Ave, sharp right to E Maplewood Dr., left on N Estill Dr., left at N Viento Dr, right at Callas Dr.

This map is not to scale. The MVUM for this area is the Coronado NF Santa Catalina RD.



Legend	
	National Forest Land
	Arizona State Land
	Private Property
	Motorized Routes
	Non Motorized Trail